

DECOUPLER CLIPS

RSIC-1.5CRC Decoupler Clips

For applications that demand a higher sound transmission reduction, SoundSense 1.5-CRC Decoupler clips are ideal for drop ceiling configurations where a cold rolled channel is used to drop the ceiling 6" or more.

Applications:

- Home Theaters
- Mechanical rooms
- Libraries/Study
- Gyms
- Golf Rooms
- Master Suites



Installation:

CRC-1.5 Decoupler Clips are snapped onto Cold Rolled Channels (Spacing is recommended at a maximum of 24" OC). *Place the top of the 1.5-CRC on the 1-1/2" (38 mm) Cold Rolled Channel, as to engage the top return of the 1.5CRC on the top flange of the 1-1/2" (38 mm) Cold Rolled Channel. While stabilizing the 1-1/2" (38 mm) Cold Rolled Channel snap the bottom portion of the 1.5 CRC on to the 1-1/2" (38 mm) Cold Rolled Channel, so as to fully engage the bottom return of the 1.5CRC onto the 1-1/2" (38 mm) Cold Rolled Channel bottom flange. Please note: Mechanical devices may be required such as adjustable pliers or Vise Grip (C4) clip to make the installation easier and quicker.*

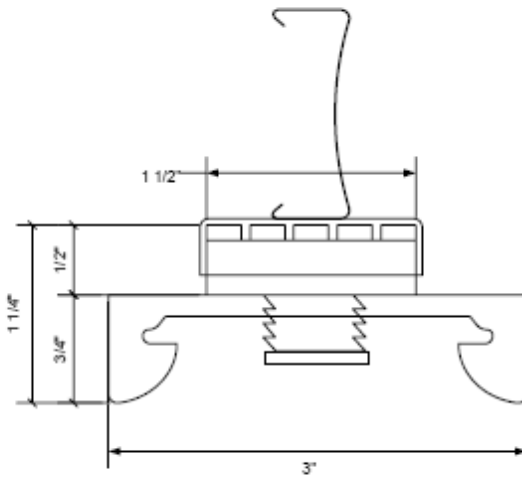
Drywall Furring Channels are then attached to the clips horizontally (creating a cross hatch assembly). Sheetrock is installed directly to the hat channel. For higher sound reduction, attach SoundSense LV-1 or SoundSense NO-2 to the furring channels. Then add two layers of sheetrock to the SoundSense LV-1 or NO-2.

Physical Properties:

Clip Dimensions:	See Attached Page
Thickness:	1-5/8" (including 7/8" hat channel) to assembly
Material Composition:	Natural blend neoprene grommet pad, threaded shaft attached to a center bushing of electroplated zinc mild steel with a galvanized steel retainer clip
Hardness:	Shore A of 50 (neoprene grommet)
Tensile Strength:	10-11.2 MPa (neoprene grommet)
Heat Resistance:	70° C for 70 hours

DECOUPLER CLIPS

PROFILE VIEW



END VIEW

